



# Renewal of path subway Wattingen and Strahloch Bridge

## Data and facts

Company	PORR SUISSE AG
Type	Bridge construction
Runtime	04.2020 - 08.2021
Principal	SBB AG

[Project report online](#)

[www.porr-group.com](http://www.porr-group.com)

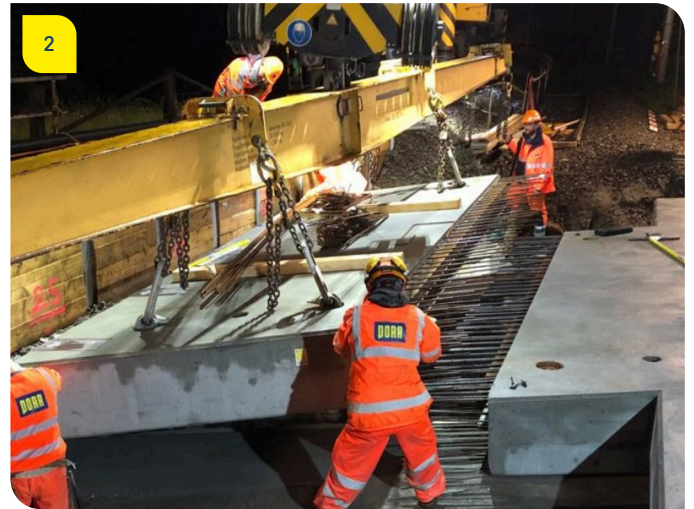




# Repair work in difficult terrain.

The Strahlloch Bridge is 44 m long and spans the Mühlebach. The superstructure of the existing natural stone arch bridge was partially dismantled. This work was carried out in meticulously planned night operations. Subsequently, a trough bridge was built, which now also serves as a base layer for the waterproofing. This project was completed with repair work on the shield wall and the lower surface of the bridge.

## Impressions



## Image notes

1

The Strahlloch Bridge.

Single-track routing during the construction work.

2

Path subway Wattingen.

Moving the precast concrete elements.

Do you have questions about the project or would you like to learn more? Feel free to contact us for further information.

**PORR AG Group Communications**

Absberggasse 47

1100 Wien

T +43 50 626-0

E-Mail: [comms@porr-group.com](mailto:comms@porr-group.com)