



Oase housing development

Data and facts

Company	PORR SUISSE AG
Type	Residential construction
Runtime	03.2016 - 09.2017
Principal	G&A ARCHITEKTEN AG EPP GERMANN ACHERMANN

[Project report online](#)

www.porr-group.com



An oasis in the heart of Altdorf.

Impressions

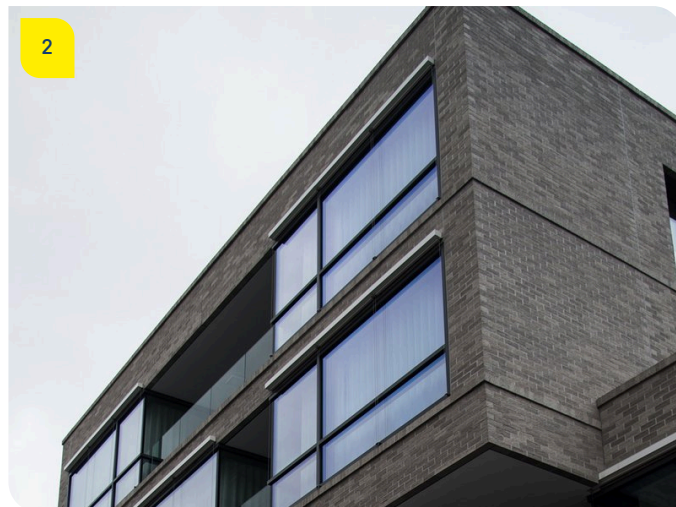


Image notes

1

The heart of Uri.

This development, consisting of 14 apartments, is located in the very centre of Altdorf.

2

Central haven.

The centrally-located freehold apartments are characterised by generous spaces and modern infrastructure.

3

Bright and sophisticated.

The high-quality construction and large window areas of these freehold apartments ensure maximum comfort for residents.

Do you have questions about the project or would you like to learn more? Feel free to contact us for further information.

PORR AG Group Communications

Absberggasse 47

1100 Wien

T +43 50 626-0

E-Mail: comms@porr-group.com