



Chrutacher bridge over the Waldemme, Flüeli

Data and facts

Company	PORR Equipment Services Deutschland GmbH
Type	Bridge construction
Runtime	04.2017 - 04.2018
Principal	Canton Lucerne, Traffic and Infrastructure Construction

[Project report online](#)

www.porr-group.com



Replacement of an ageing bridge.

The renewed section of the canton route K36, running Schüpfheim–Flühli–Sörenberg, measures around 250m. The more than 50m-long and 12m-wide concrete bridge had to be completely manufactured on site: abutments were constructed, the shoring erected and the bridge substructure formed. After reinforcement and tension cables had been laid, 560m³ of concrete was poured in a single cast.

Impressions

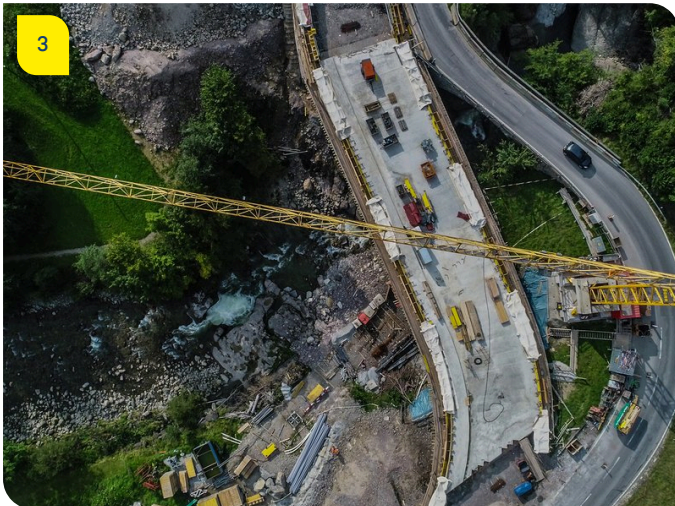


Image notes

1

More convenient road layout.

The new Chrutacher bridge in the Lammschlucht no longer crosses the Waldemme at right angles, but rather runs diagonally across. This serves to streamline the road layout.

2

A milestone was concreted.

560m³ of concrete flowed to form the slab of the new Chrutacher bridge in Flühli.

3

Logistical challenge.

Owing to the limited space available—the traffic flowed past right next to the construction site—an especially large crane had to be used.

Do you have questions about the project or would you like to learn more? Feel free to contact us for further information.

PORR AG Group Communications

Absberggasse 47

1100 Wien

T +43 50 626-0

E-Mail: comms@porr-group.com